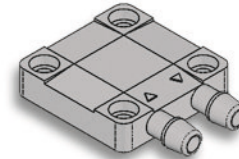


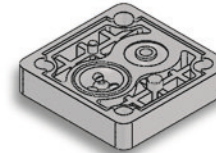
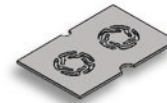


Customised Pumps  
No Additional Costs

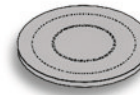


**Connectors** Barbed fittings, internal threads and manifold mounting available. Selectable port direction.

**Valves** Different designs and materials available.



**Flow channels** Pressure- or vacuum-optimised.



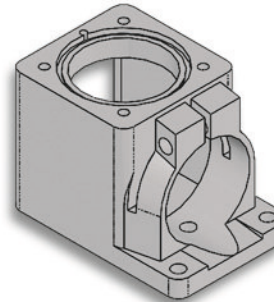
**Diaphragm** Application-specific designs. Free choice of materials, geometry, hardness, etc.



**Eccentric** Stroke and bearing selectable.

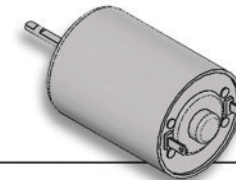


**Connection rods** Available in different lengths.



**Drives** Iron core, coreless, shaded pole and brushless motors with choice of operating voltages and individual wiring.

**Housings** With individual mounting options and installation positions.





## Contact

**Schwarzer Precision GmbH**  
Am Lichtbogen 7 · 45141 Essen · Germany



Tel. +49 201 31 697 - 0  
Fax +49 201 31 697 - 29

info@schwarzer.com  
www.schwarzer.com

## Pump Technologies

### Gas pumps:

- Eccentric diaphragm pumps
- Rotary diaphragm pumps
- Miniature vane pumps
- Linear diaphragm pumps
- Pivot pumps
- Vibrating diaphragm pumps

### Liquid pumps:

- Eccentric diaphragm pumps
- Rotary diaphragm pumps

## Performance Range

### Gas pumps:

- **Flow** from 0.04 l/min to 20.8 l/min
- **Pressure** up to 3.1 bar rel.
- **Vacuum** up to -970 mbar rel.

### Liquid pumps:

- **Flow** from 20 ml/min to 1400 ml/min
- **Pressure** up to 15 m H<sub>2</sub>O
- **Suction Height** up to -9 m H<sub>2</sub>O



## Typical Applications

- Medical technology
- Environmental + analysis technology
- Electrolyte circulation
- Safety technology
- Print + reprographic technology
- Industrial engineering
- Food industry
- Air-conditioning + energy technology

*We care.*