



SP 620 EC-TH-L

#### Product Features

- oil free
- maintenance free
- reduced vibrations
- low noise
- small size
- lightweight
- minimal current consumption
- self priming

#### Applications

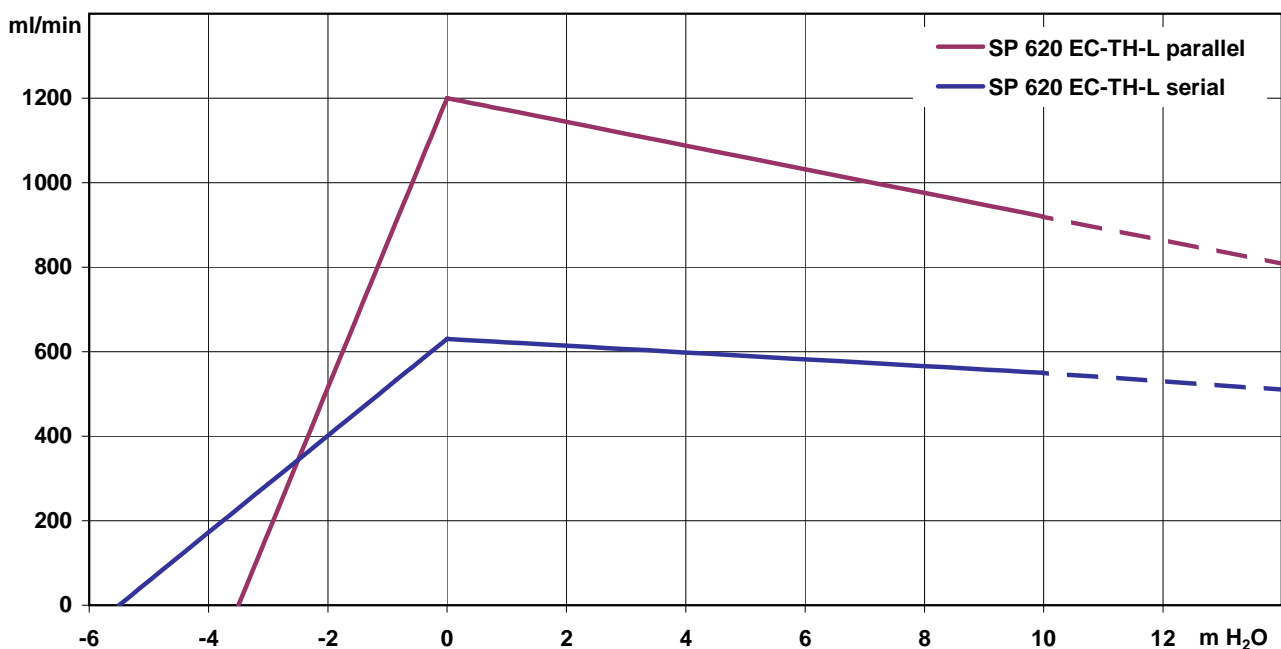
- Industrial Applications
- Medical Applications
- Laboratory and Analytical Applications
- Cooling and Heating
- Cleaning



These pumps are our standard models. For special requirements we are offering customised versions. Please contact us!

Designation		SP 620 EC-TH-L	
Operating Voltage		12 Vdc	
Art.No.		7s57108	
Hydraulic Performance (measured with water at 20°C)			
		serial	parallel
Free Flow [ml/min]		630	1200
Flow at 15 mWC [ml/min]		500	780
Max Press. Height [m H <sub>2</sub> O]		> 10	> 10
<i>Although the pumps are able to produce pressure above 10 mWC, it is not recommended to exceed this limit!</i>			
Max Vacuum (dry) [mbar]		-500	-300
Max Suction Height (filled with water) [m H <sub>2</sub> O]		-5,5	-3,5
Motor / Power Consumption			
Motor Type	standard optional	Long Life Double Ball Bearing -	
Max Current [mA]		1000	
Construction			
Pump Head	standard optional	PPS customer specific - upon request	
Diaphragm, Valves	standard optional	EPDM FPM (Viton) / FFPM (Kalrez) / PTFE (Teflon)	
Weight [g]		240	

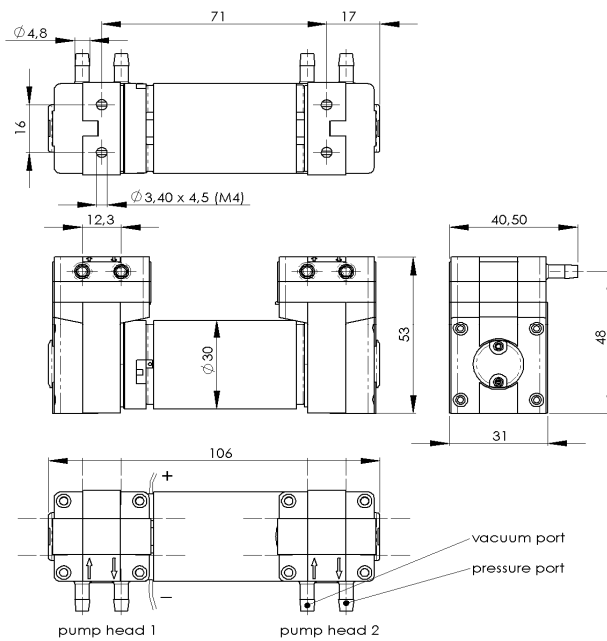
**Performance Curves**



Steeler Strasse 477 • 45276 Essen • Germany  
 Phone: +49 201 31697-0 • Fax: +49 201 31697-29  
 e-mail: info@schwarzer.com • http://www.schwarzer.com



SP 620 EC-TH-L



Standard: connection ports as shown. Optional: 3 other port positions possible (see dashed lines)

