



SP V 27 RO-D



SP V 27 RO-VD

Product Features

- oil free
- maintenance free
- reduced vibrations
- low noise
- small size
- lightweight
- minimal current consumption

Applications

- Blood Pressure Monitoring
- Industrial Applications



Designation	SP V 3TC27B RO-D	SP V 6TC27BS RO-D	SP V 6TC27BM RO-D	SP V 12TC27B RO-D	SP V 12TC27HP RO-D	SP V 12TV27A RO-VD
Art.Nr.:	7k73050	7k73051	7k73052	7k73056	7k73061	7k73015
Main Application	Blood pressure			Industrial		
Body						
Body Size	Ø 27 mm x 58 mm					
Nozzle Length / Ø	6.3 mm / 4.2 mm					
Bearings	oiled					
Number of Nozzles	1 (outlet only)					2
Medium	Air					
Motor						
Motor speed	low / slow		medium		fast	-
Coil Winding	3085 RF-370C	20200 RF-370C	22170 RF-370C	17315 RK-370CA	18260 RK-370CA	13470 RK-370CA
Rated Voltage	3 Vdc	6 Vdc	6 Vdc	12 Vdc	12 Vdc	12 Vdc
Operational Voltage	2.0 - 4.5 Vdc	4.5 - 7.0 Vdc	4.5 - 7.0 Vdc	9.0 - 14.0 Vdc	9.0 - 14.0 Vdc	9.0 - 14.0 Vdc
Brush Material	precious metal	precious metal	precious metal	carbon	carbon	carbon
Performance						
Free flow rate	2.0 l/min	1.6 l/min	1.9 l/min	2.0 l/min	2.1 l/min	1.0 l/min
Test Cycle	500cc from 0 to 300 mmHg at Rated Voltage					
Pressurizing Time at Test	max. 9.5 sec.	max. 12 sec.	max. 8.5 sec.	max. 8.0 sec.	n/a	n/a
Current Draw at Test	max. 630 mA	max. 320 mA	max. 420 mA	max. 200 mA	max. 220 mA	max. 110 mA
Noise Level at Test (30 cm distance from 200 - 300 mmHg)	max. 55 dB(A)	max. 53 dB(A)	max. 57 dB(A)	max. 55 dB(A)	n/a	n/a
Max. leak Rate at 300 mmHg / 500cc	2 mmHg/min	2 mmHg/min	2 mmHg/min	2 mmHg/min	n/a	n/a
Dead Head Pressure	525 mmHg	600 mmHg	600 mmHg	525 mmHg	1000 mbar	600 mbar
Dead Head Vacuum	-	-	-	-	-	350 mbar
Re-start Volt. at 200 mmHg up to 300 mmHg	max. 1.5 V	max. 3.0 V	max. 3.0 V	max. 6.0 V	n/a	n/a
Environmental Conditions						
Operational Temp.	+5 - +45°C					
Operational Humidity	30%-80% rel. Hum.					
Storage Temperature	-20 - +70°C					
Storage Humidity	30%-80% rel. Hum.					
Lifetime						
Test cycle (lifetime)	500cc from 0 to 260 mmHg at Rated Voltage					n/a
Specified Lifetime	300000 test cy.					n/a
MTBF	400000 cycles					n/a

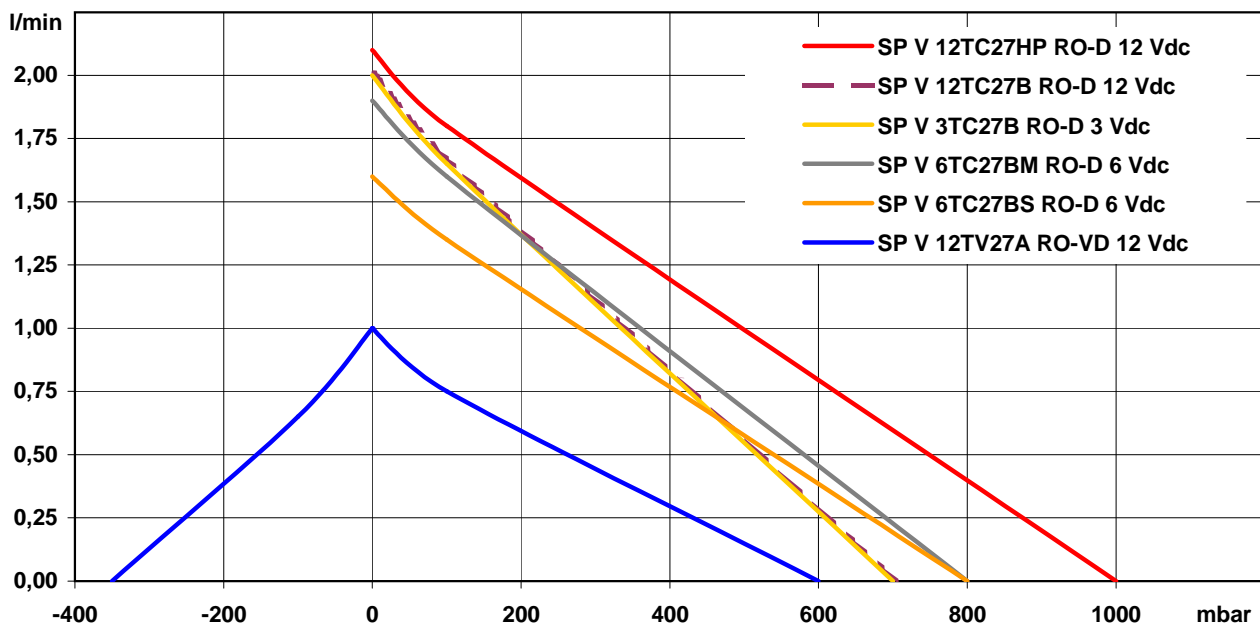


Steeler Strasse 477 • 45276 Essen • Germany
 Phone: +49 201 31697-0 • Fax: +49 201 31697-29
 e-mail: info@schwarzer.com • http://www.schwarzer.com



Designation	SP V 3TC27B RO-D	SP V 6TC27BS RO-D	SP V 6TC27BM RO-D	SP V 12TC27B RO-D	SP V 12TC27HP RO-D	SP V 12TV27A RO-VD
Voltage Art.-No.	3 Vdc 7k73050	6 Vdc 7k73051	6 Vdc 7k73052	12 Vdc 7k73056	12 Vdc 7k73061	12 Vdc 7k73015
Pneumatic Performance						
Free Flow [l/min]	2,0	1,6	1,9	2,0	2,1	1,0
flow at:	Pressure Side					
100 mbar [l/min]	1,65	1,35	1,60	1,65	1,80	0,75
max. Pressure [mbar]	700	800	800	700	1000	600
flow at:	Vacuum Side					
-100 mbar [l/min]	-	-	-	-	-	0,65
max. Vacuum [mbar]	-	-	-	-	-	-350
Motor / Power Consumption						
Motor Type	Iron Core					
max. Current [mA]	610	230	280	160	220	110
Construction						
Pump Body	POM					
Diaphragm	EPDM					
Valves	NBR Rubber					
Weight [g]						62

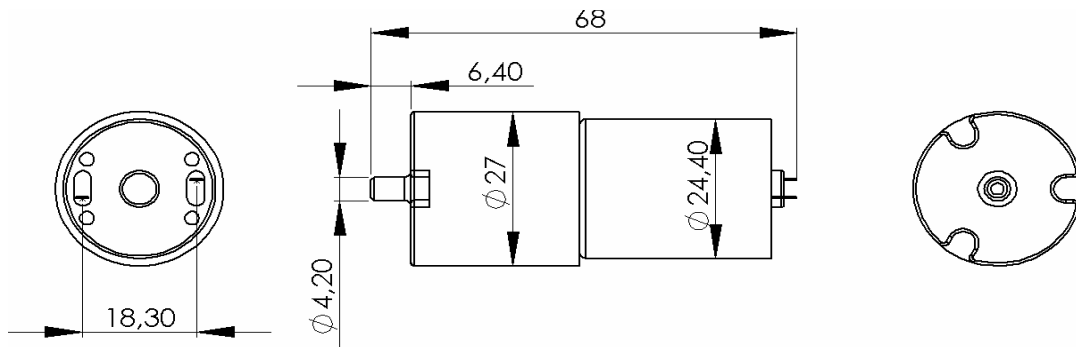
Performance Curves



Steeler Strasse 477 • 45276 Essen • Germany
 Phone: +49 201 31697-0 • Fax: +49 201 31697-29
 e-mail: info@schwarzer.com • http://www.schwarzer.com



SP V 27 RO-D



SP V 27 RO-VD

