



SP 625 EC Liquid

The pumps listed on this data sheet represent a cross-section of the large number of possibilities for each pump type. Based on our modular pump design, all pumps can be customised exactly to meet the needs of your application - within days and at standard pricing. Please contact us for details.



SP 625 EC-LC-L

PRODUCT FEATURES

- Chemical resistant versions available
- Small size and low weight
- Suitable for any mounting orientation
- Oil-free, maintenance-free
- Self-priming
- Low vibration and sound level

TYPICAL APPLICATIONS

- Fuel cells
- Kidney dialysis
- Laboratory analysis
- Pipetting
- Cleaning and disinfection
- Inkjet printing



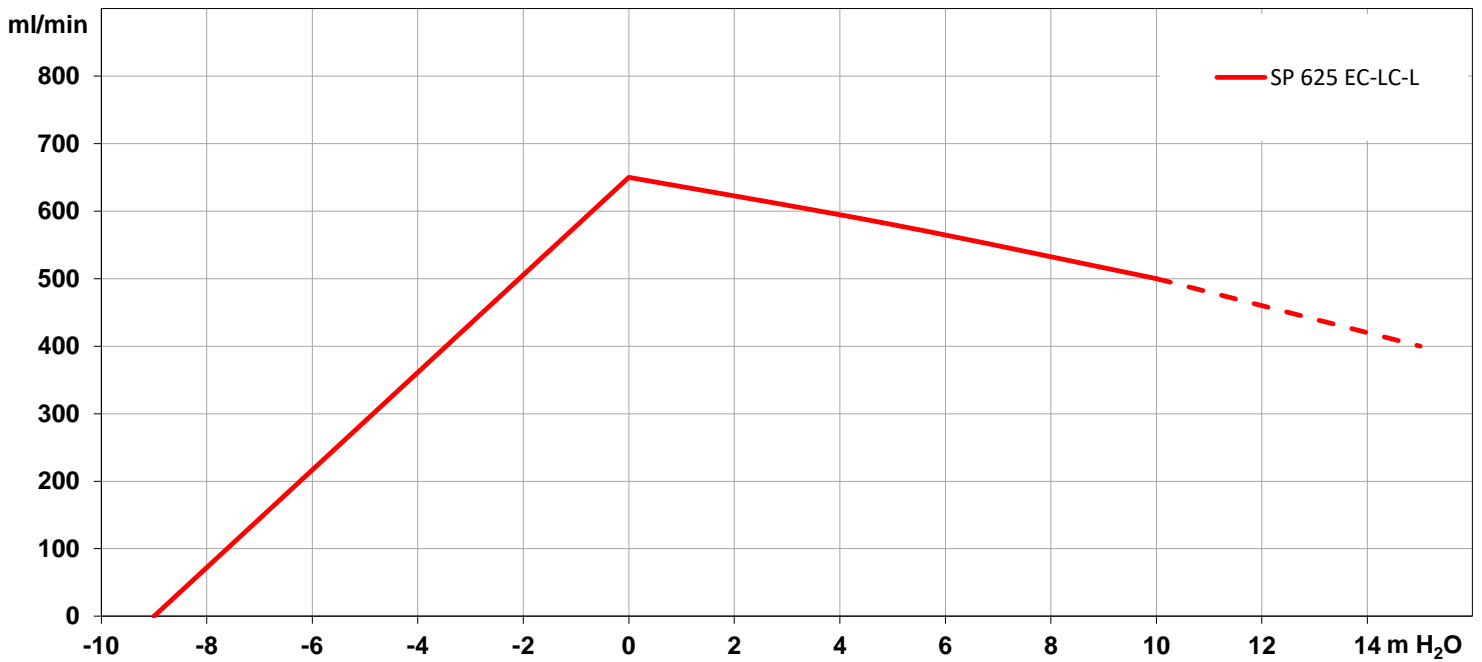
SP 625 EC Liquid

TYPE		SP 625 EC-LC-L	
Operating Voltage [Vdc]	12	24	
Art. No.	7s57314	7s57315	
max. Nominal Current [mA]	900	500	
PERFORMANCE			
max. Flow [ml/min]	650	650	
max. Pressure [m H ₂ O]	15	15	
max. Suction Height [m H ₂ O]	-9	-9	
max. Vacuum (dry) [mbar]	-600	-600	
MOTOR			
Standard Motor	iron core		
Standard Bearings	sintered and ball bearings		
Motor Connection	soldering lugs / flat connectors		
Optional Motor	n/a		
Optional Bearings	n/a		
MATERIALS			
Standard Pump Head	PPS		
Optional Pump Head	customer specific (upon request)		
Standard Diaphragm	EPDM		
Optional Diaphragm	FKM / FFKM / PTFE		
Standard Valves	EPDM		
Optional Valves	FKM / FFKM / customer specific (upon request)		
Standard Gaskets	EPDM		
Optional Gaskets	FKM / FFKM / customer specific (upon request)		
HYDRAULIC CONNECTION			
Standard Connectors	barbed connectors		
Optional Connectors	n/a		
DIMENSIONS + WEIGHT			
Dimensions [mm] W x H x L	31 x 52 x 83		
Weight [g]	220		
OPERATING CONDITIONS			
Storage Temperature [°C]	-10 – +60 (extended temperature ranges on request)		
Ambient Temperature [°C]	-10 – +40 (extended temperature ranges on request)		
Temperature of Media [°C]	0 – +80 (extended temperature ranges on request)		
Acceptable Humidity [%rH]	5 – 80 (non condensing)		

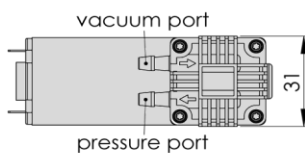
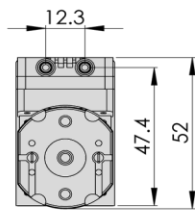
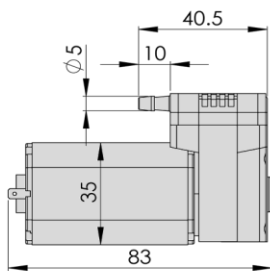


SP 625 EC Liquid

PERFORMANCE DIAGRAM | SP 625 EC-LC-L



DRAWING | SP 625 EC-LC-L



3D CAD Data:

- ▶ Download STEP
- ▶ Download IGES

All dimensions given in [mm]. Drawing shows standard orientation of pneumatic connectors (3 alternative orientations possible).

You can also download the 3D CAD files from the SP website: ▶ www.schwarzer.com/download



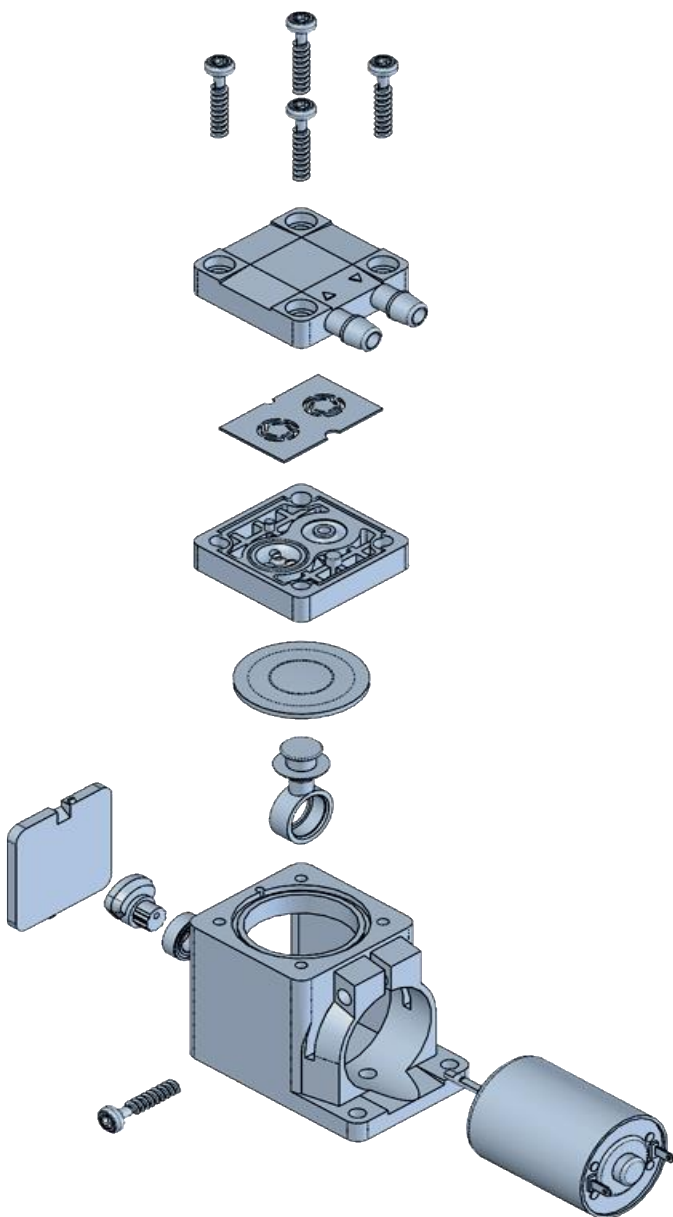
DISCLAIMER

Flow values are subject to the standard conditions specified in DIN 1343. The use of other materials may cause deviations in performance values. The technical data shown on this data sheet represents the typical mean values achieved by the products in our standard testing procedure. All data provided is for information only and does not represent production values. Standard products are subject to change without notice.

08.05.2025

CUSTOMISING

The pumps in this data sheet represent our standard types. All pumps can be customised exactly to your specific requirements in all parameters.



Pump heads

Different materials available

Connectors

Barbed fittings, internal threads and manifold mounting available. Selectable port direction.

Valves

Different designs and materials available.

Flow channels

Pressure- or vacuum-optimised.

Diaphragm

Application-specific designs. Free choice of materials, geometry, hardness, etc.

Connection rods

Available in different lengths.

Eccentric

Stroke and bearing selectable.

Housings

With individual mounting options and installation positions.

Drives

Iron core, coreless, shaded pole and brushless motors with choice of operating voltages and individual wiring.